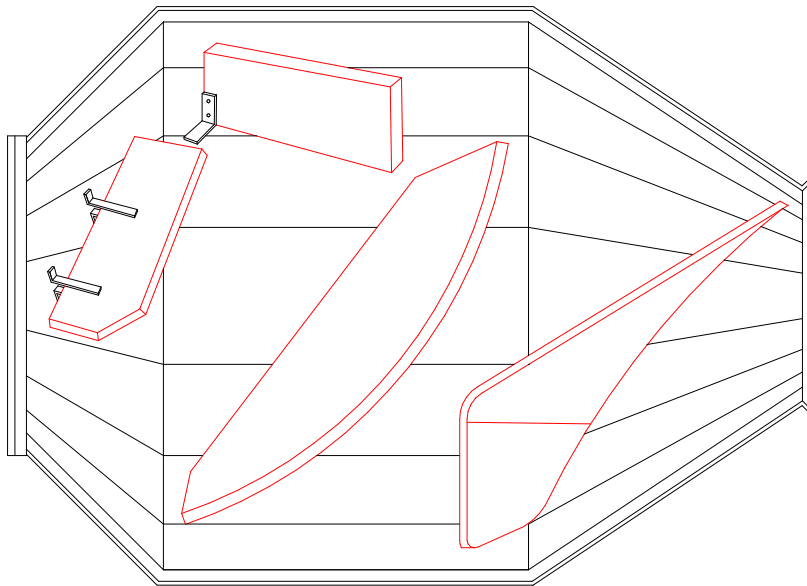


DUR-X-LINE®

WEAR RESISTANT LINERS FOR YOUR CONCRETE BATCH PLANTS



- **WELD IN LINERS MADE TO SIZE TO FIT YOUR WEAR APPLICATIONS**
- **GREATLY REDUCES CONCRETE BUILD UP INSIDE CONCRETE MIXERS AND HOPPERS**
- **DUR-X-LINE® URETHANE OUTLASTS STEEL MANY TIMES OVER**
- **LIGHTWEIGHT COMPARED TO STEEL FOR EASY INSTALLATION**
- **REDUCES MAINTENANCE COSTS**
- **RUBBER/CERAMIC LINERS FOR YOUR TOUGHEST WEAR PROBLEMS**

COST EFFECTIVE **DUR-X-LINE®** **LINERS FOR**



- **TILT MIXERS**
- **TILT MIXER BLADES**
- **AGGREGATE WEIGH BATCHERS**
- **ROTARY DISTRIBUTORS**
- **DUMP CONES & CHUTES**
- **BINS AND HOPPERS**

**FOR MORE INFORMATION CONTACT YOUR DUREX
REPRESENTATIVE SHUMAKER INDUSTRIES @ 800-326-9349**

Shumaker Industries, Inc.
924 Water Street
P.O. Box 206
Northumberland, PA 17857